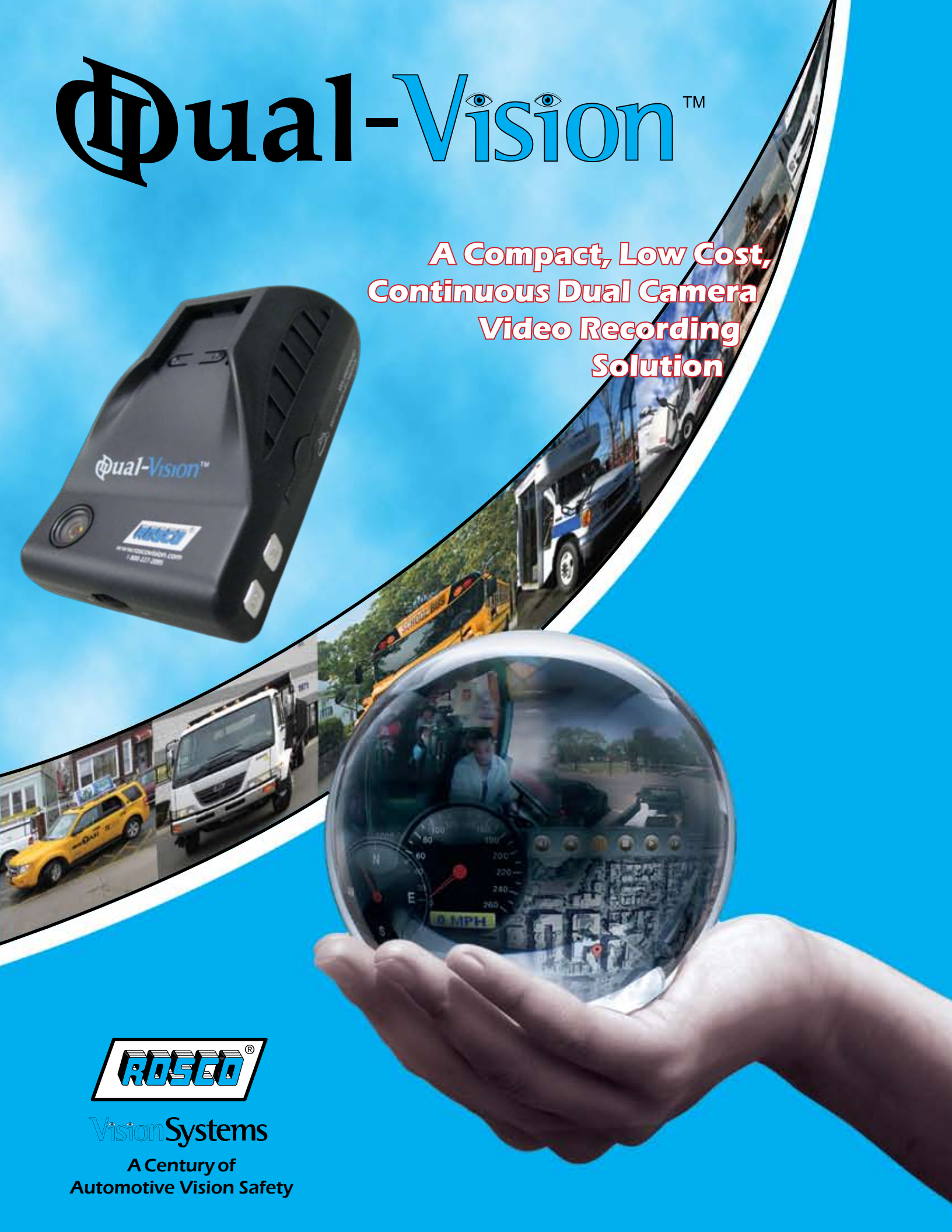


Dual-Vision™

**A Compact, Low Cost,
Continuous Dual Camera
Video Recording
Solution**



Vision Systems

A Century of
Automotive Vision Safety

Dual-Vision™

Continuous Video Recorder

Increase Productivity & Profitability by Improving Driver Performance

- Reduce Accidents & Vehicle Abuse
- Protect Against False Allegations & Fraudulent Claims
- Lower Insurance Premiums



Product Highlights:

- G-Force, Panic & Speed Event Recording & Tagging
- Simple installation
- Up to 30 hours of high quality continuously recorded video & audio on an SD card
- Video/audio can be replayed on any computer, no special de-coding subscription required
- Optional security housing prevents removal of data card by non-authorized personnel
- Integrated GPS tracking
- Speed, direction, location, vehicle number and time/date stamp
- Audio and video can be converted to .avi file

Dual-Vision™ mounted to a coach bus windshield.

Dual-Vision™ provides thorough coverage of the driver & loading/unloading area, external events & conditions, traffic signals & passenger actions



- P/N: DV133 (Shown closest with standard mount)
- P/N: DV132 (Shown far left with lockable security enclosure)

Technical Specifications:

- **Recording Type** - Two cameras (one inward & one outward facing)
- **Video Resolution** - VGA (640 x 480) Up to 20 Frames Per Second (10 fps per camera), 2 Channels
- **Camera Type** - CMOS sensor, 1.3 Megapixel, Front 143°, Interior 170°
- **Memory** - Up to 30 hours on 32GB SDHC card
- **Dual-Vision Player Program** - All Software Resides on Commercially Available SD Card & Can be Copied to Additional SD Cards & Played on Most PCs with Windows 7, XP, or Vista Operating Systems
- **Data Management** - Self Managed
- **LCD Display** - Provides Quantity of Events, Information on Operational Status, GPS Connection, Time, Speed, etc.
- **Audio** - Built-in Microphone, Audio Recording Can Be Removed Via the User Set-up Configuration Menu, Built in Speaker for Annunciation of Alerts
- **GPS** - Built-in GPS Module w/ Google Maps Routing & Tracking
- **Automatic G-Sensor Alarm (3-Axis) Event** - Individual Settings for Each Axis of Movement - (X, Y, Z) Adjustable in 0.10 G Increments
- **Automatic Speed & Audible Alarm Event** - Threshold Speed Settings are Adjustable Via the User Set-up Configuration Menu
- **Power Input** - 12V to 24V DC
- **Temporary Power Source** - Cigarette Lighter Plug for Temporary & Testing Power
- **Permanent Power Kit** - Includes Shut-off Relay Timer Adjustable for Operation After Ignition Shut-off from 30 Seconds to 14 Hours
- **Lockable Security Housing (optional)** - Protects the SD Card, Power Input from Tampering, Includes Heavy Duty Mounting Base, Adhesive Pads & Integral 20 LED Night Vision Infrared Module
- **Operating Temperature** - -20°C (-5°F) to + 70°C (+160°F)



**STOP DRIVERS FROM TEXTING WHILE DRIVING.
USING DUAL-VISION™ WILL HELP DETER DRIVERS
FROM ENGAGING IN UNSAFE PRACTICES.**



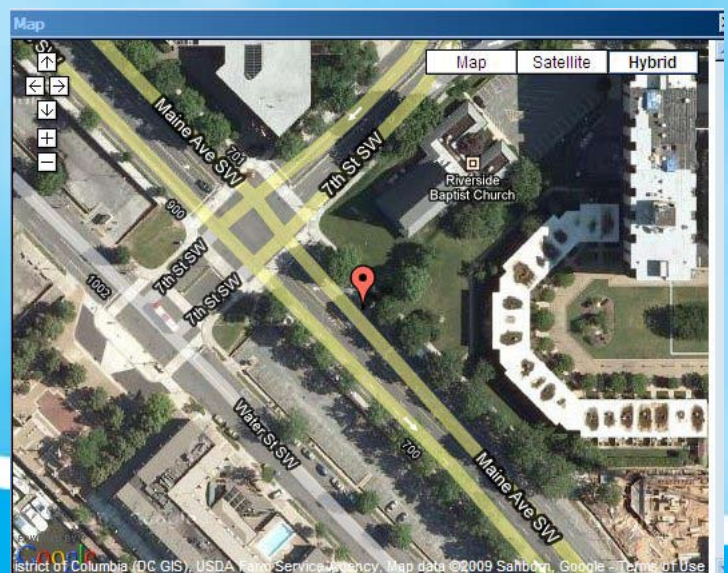
Component Key	Component Key	Component Key
1 - Power Connection Port	5 - Cancel Emergency Record	9 - Rear Mount Connection
2 - Front Mounting Connection	6 - Emergency Record	10 - Built-in Speaker
3 - Outward Facing Camera	7 - Volume Control	11 - Inward Facing Camera
4 - SD Memory Slot	8 - Status Display	

A major distinction of the Dual-Vision™ system is its **continuous loop recording** function: unlike other windshield-mounted recorders which only record for a few seconds before and after a pre-defined “event”, Dual-Vision™ sees and records everything! Additionally, when the Dual-Vision™ recorder notes an event (ex: pre-set G-shock setting, speed overage or driver-actuated marker button), a separate 60 second event file is created with data captured before and after the event. Event data is protected, and cannot be overwritten by the continuous record mode.

The handling of the data with Dual-Vision™ is completely in the fleet-owner’s hands. **No subscription is required**, in contrast to other services that interpret the data and then charge a fee to send the owner a video record of events or driver activity. Data can be easily downloaded from the SD card to a computer, where it can be reviewed, then discarded or archived at the owner’s discretion.

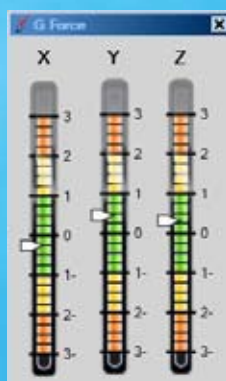
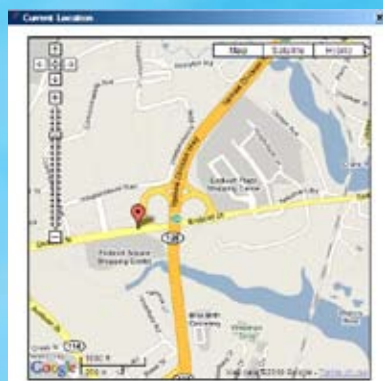
Rosco has been an innovator in vision safety for over 100 years. Dual-Vision™ represents an economical alternative to full-scale mobile DVR systems, **providing thorough coverage of the driver and loading/unloading area, external events and conditions, traffic signals, and passenger actions**, at a fraction of the cost of traditional technologies such as DVR recording and stand alone internal camera equipment. Also, installation is reduced dramatically, thus allowing for the simple transfer of Dual-Vision™ to any vehicle at any time with no monthly maintenance, no recurring fees and no setup cost.

Standard Player Software Included On SD Card



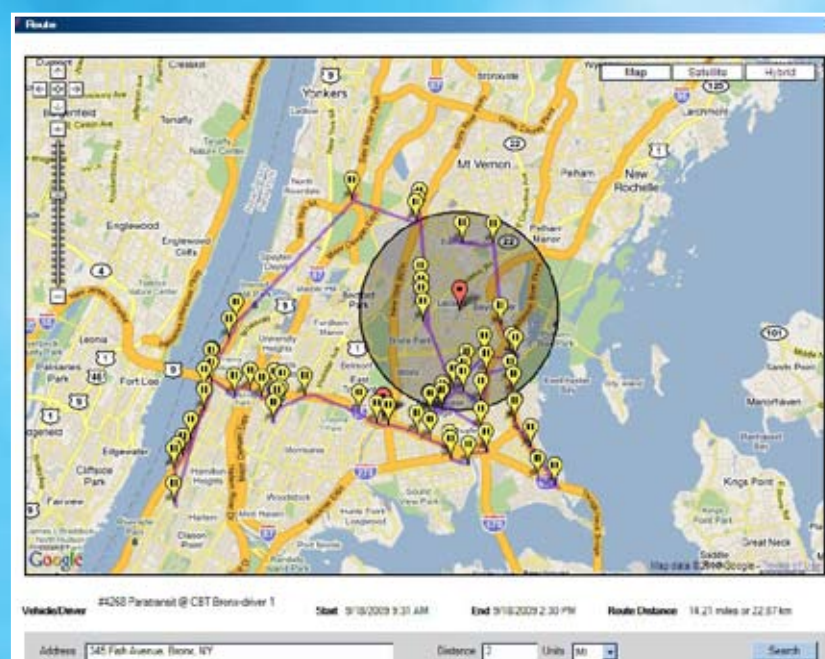
Optional DV-ProTM

Enhanced Player & Database Management Program



DV-ProTM is the ultimate tool for fleet managers & safety professionals looking to improve database management, archiving, & reporting of Dual-VisionTM recorded information. This easy to install & simple to operate program takes the standard Dual-VisionTM player to the next level by providing enhanced playback capabilities combined with the following features:

- Instantaneous reading of SD card files, total events, and types of events such as:
 - G-shock
 - Panic button
 - Speed overages
- Downloaded of all or specific events based on date, driver, vehicle #, etc.
- DV-ProTM archives & organizes data to allow for queries & searches by any number of descriptive vehicle or driver criteria
- Excel reports on driver safety and or vehicle profiles can be created with ease
- Google mapping of GPS location & routing of vehicle travel history, Geofencing, street & address searches
- Playback video with specific indicators as to where events like G-shock & speed occurred
- Create easy to e-mail standard format .avi video files
- Archive & purge data within the database
- Clear SD cards
- Like Dual-VisionTM, this is a self managed item with NO MONTHLY, NO ANNUAL FEES & NO SETUP COST



Vehicle/Driver: #4268 Paratransit @ CBT Bronx-driver 1 Start: 11/1/2009 9:31 AM End: 11/10/2009 2:30 PM Route Distance: 18.21 miles or 22.67 km

Address: 345 Fish Avenue Bronx, NY Distance: 2 Units: Mi Search

Report - Drivers and Vehicles

Driver: <All Drivers> Vehicle: <All Vehicles>

Preset Time: any time

Custom Time: Start: 1/1/2009 12:00 AM End: 11/4/2009 10:21 AM

Vehicle Name	Driver	All Events	Speed Events	GForce Events	Button Events
#4268 Paratransit...	driver 1	63	19	28	16
Rt #96	Jane Doe	1	0	0	1
Mass Trans #10	John Smith	15	12	0	3
#4268 Paratransit...	NJT Para, Joe Lu...	1	0	1	0
#4268 Paratransit...	NYCT Para, Joe...	2	0	2	0
Mass Trans #10	Sally Brown	0	0	0	0

Build Report Export to Excel Export to CSV Dismiss



Vision Systems

90-21 144th Place
Jamaica, New York 11435
Phone: 718-526-2601
Fax: 718-297-0323
www.roscovision.com

A Century of Automotive Vision Safety

Dual-VisionTM



CAT NO. 0111